

PEDAL

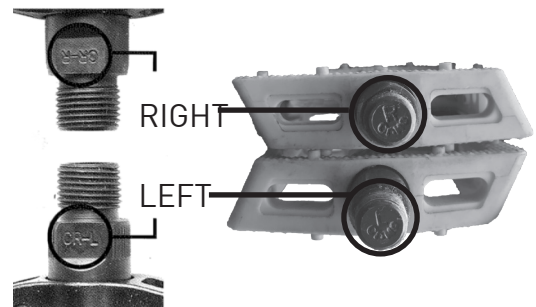
INSTALLATION GUIDE

EVO

0800 424 537
EVOCYCLES.CO.NZ

PEDAL INSTALLATION

- 1 IDENTIFY LEFT VS. RIGHT PEDAL.** There is a "L" or "R" stamped into the axle (threaded part that looks like a screw).
NOTE: THEY ARE NOT THE SAME!



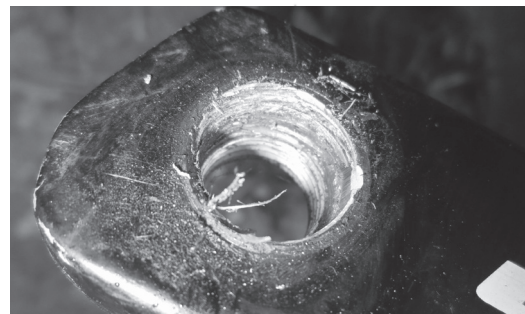
- 2 INSTALL THE LEFT HAND PEDAL FIRST.** you will have to screw it in **COUNTER-CLOCKWISE**, because the threading is the reverse of a normal screw. Do this by slowly pedaling the cranks backwards. If the pedals feel stiff **STOP** and then re-try it, it should feel like a smooth motion.

Do not use the wrench until you are ready to tighten it for the final few turns.

Tighten it down until you can't anymore.

Check and tighten regularly.

NOTE: Hand tight is not sufficient. Use a tool. If after riding your crank looks like this you have not followed these instructions. Your crank needs replacing (this is **NOT** covered by warranty).



- 3 INSTALL THE RIGHT HAND PEDAL.** This one threads in **CLOCKWISE**, like a normal screw. Follow the principals as discussed in **STEP 2** for the left pedal.



- 4** Wipe off any excess grease from around the crank.

